

# PRODUCT INFORMATION PACKET



Model No: 071T17FH5327

Catalog No: R307

Aluminium Motor, 0.50 & 0.50 HP, 3 Ph, 60 & 50 Hz, 230/460 & 200/400 V, 1800 & 1500 RPM, 71 Frame, TEFC



Regal and LEESON are trademarks of Regal Rexnord Corporation or one of its affiliated companies.

©2025 Regal Rexnord Corporation, All Rights Reserved. MC017097E





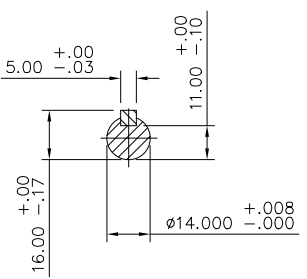
### Nameplate Specifications

Phase	<b>3</b>	Output HP	<b>0.50 &amp; 0.50 Hp</b>
Output KW	<b>0.37 &amp; 0.37 kW</b>	Voltage	<b>230/460 &amp; 200/400 V</b>
Speed	<b>1695 &amp; 1380 rpm</b>	Service Factor	<b>1.15 &amp; 1.15</b>
Frame	<b>71</b>	Enclosure	<b>Totally Enclosed Fan Cooled</b>
Thermal Protection	<b>No Protection</b>	Efficiency	<b>74 &amp; 68 %</b>
Ambient Temperature	<b>40 °C</b>	Frequency	<b>60 &amp; 50 Hz</b>
Current	<b>1.8/0.9 &amp; 1.8/0.9 A</b>	Power Factor	<b>70</b>
Duty	<b>Continuous</b>	Insulation Class	<b>F</b>
Design Code	<b>B</b>	KVA Code	<b>H</b>
Drive End Bearing Size	<b>6203</b>	Opp Drive End Bearing Size	<b>6203</b>
UL	<b>Recognized</b>	CSA	<b>Y</b>
CE	<b>Y</b>	IP Code	<b>55</b>
Number of Speeds	<b>1</b>		

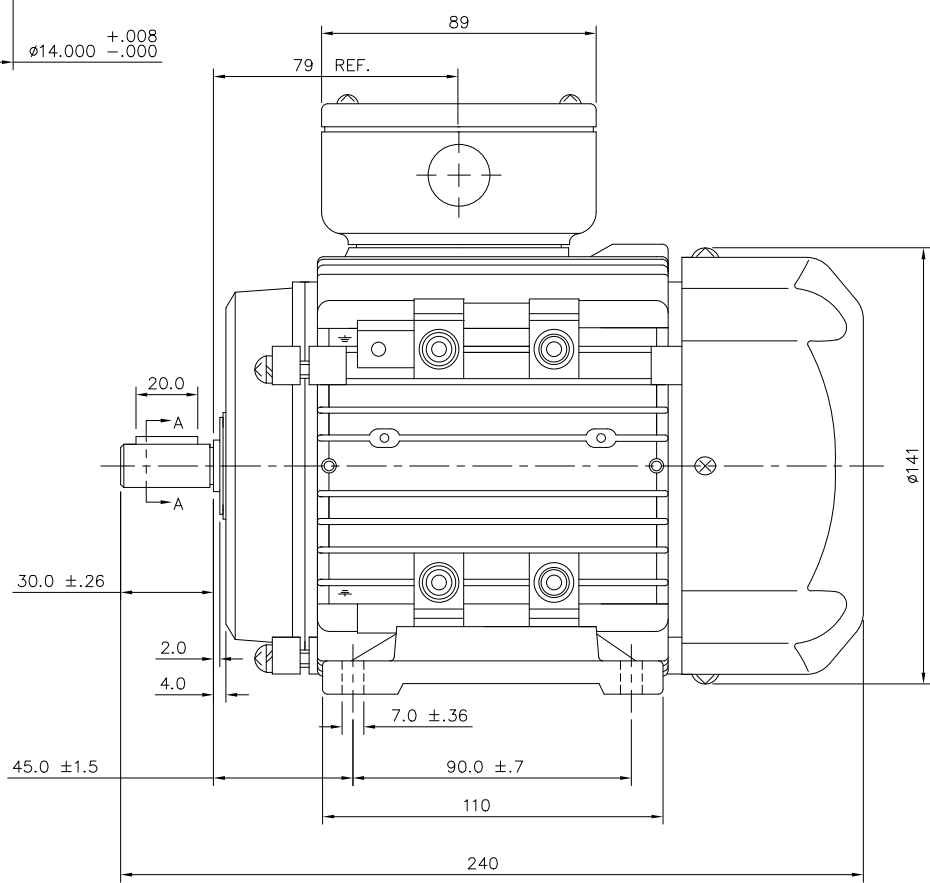
### Technical Specifications

Electrical Type	<b>Squirrel Cage Inverter Rated</b>	Starting Method	<b>Line Or Inverter</b>
Poles	<b>4</b>	Rotation	<b>Reversible</b>
Resistance Main	<b>11.84 Ohms</b>	Mounting	<b>Rigid Base</b>
Motor Orientation	<b>Horizontal</b>	Drive End Bearing	<b>Ball</b>
Opp Drive End Bearing	<b>Ball</b>	Frame Material	<b>Aluminum</b>
Shaft Type	<b>IEC</b>	Overall Length	<b>9.44 in</b>
Frame Length	<b>4.68 in</b>	Shaft Diameter	<b>0.555 in</b>
Shaft Extension	<b>1.18 in</b>	Assembly/Box Mounting	<b>F3</b>
Inverter Load	<b>CONSTANT 20:1</b>		
Outline Drawing	<b>16986000ME</b>	Connection Drawing	<b>00546501ME</b>

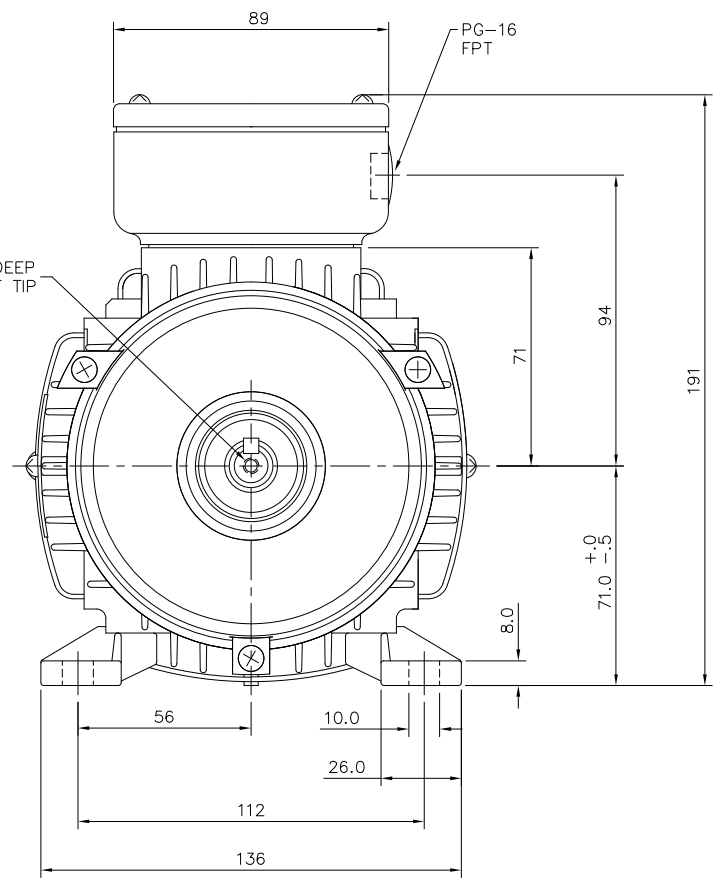




SECTION "A-A"



M5-.80 X 12.5 DEEP  
THREADED SHAFT TIP



DRAWING REVISION C	REVISION BY KVDG	REV DATE/ DATE 07/31/2025
REQUEST NUMBER ECR-0244746	APPROVED BY DS	DATE 07/31/2025

REQUEST NUMBER DESCRIPTION  
UPDATED FROM MARATHON TO RRX TEMPLATE

COPYRIGHT (PER REVISION DATE) REGAL BELOIT AMERICA, INC. ALL RIGHTS RESERVED. PROPRIETARY AND CONFIDENTIAL INFORMATION - THIS DOCUMENT IS THE PROPERTY OF REGAL BELOIT AMERICA, INC. (OWNER) AND CONTAINS OWNER'S PROPRIETARY INFORMATION. ANY PERSON, CORPORATION OR OTHER FIRM RECEIVING IT IS DEEMED, BY RECEIVING IT, TO AGREE THAT IT, AND/OR ANY PART OF IT, SHALL NOT BE DISCLOSED TO ANY PERSON, CORPORATION OR OTHER ENTITY, DUPLICATED, AND/OR USED, EXCEPT AS EXPRESSLY APPROVED IN WRITING IN ADVANCE BY OWNER. THIS DOCUMENT SHALL BE RETURNED TO OWNER UPON REQUEST. IT MAY BE SUBJECT TO CERTAIN RESTRICTIONS UNDER APPLICABLE EXPORT CONTROL LAWS AND REGULATIONS.

TOLERANCES (EXCEPT AS NOTED):

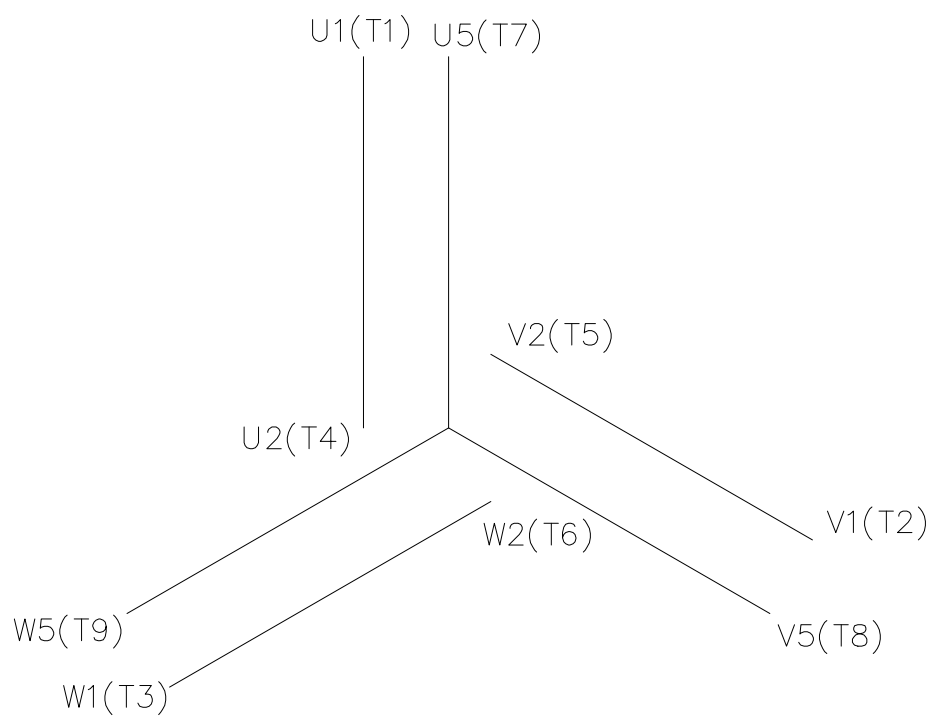
DEC.	INCH	mm	ANGLE
.X	±0.1	[±3]	±7'30"
.XX	±0.03	[±0.8]	
.XXX	±0.005	[±0.13]	
.XXXX	±0.0005	[±0.013]	

REMOVE BURRS & BREAK SHARP  
EDGES: .003/.015 [.08/.38] X 45°  
CORNER FILLETS: R.02 [.5]  
MACHINED SURFACES: 125/3.2  
INCH/mm

mm DIMENSIONS IN [BRACKETS]  
ARE FOR REFERENCE ONLY

DRAWN BY ADS
DATE 01/18/2002
APPROVED BY
DATE
REFERENCE OSVC-300-553
THIRD ANGLE PROJECTION

Regal Beloit America, Inc.	
MAT'L ALUMINIUM	PROCESS/FINISH
SIZE A	DRAWING NUMBER 169860-00ME
SHEET 1 OF 1	



REF. DECAL (IEC) 080644  
REF. DECAL (NEMA) 080446

### IEC MARKINGS

LOW VOLTAGE	HIGH VOLTAGE
LINE VOLTAGE	L1 L2 L3 JOIN
TERMINAL	U1 V1 W1 W2 U2 V2
LOW	U1,U5 V1,V5 W1,W5 --- U2,V2,W2 ---
HIGH	U1 V1 W1 U2,U5 V2,V5 W2,W5

### NEMA MARKINGS

LOW VOLTAGE	HIGH VOLTAGE
LINE VOLTAGE	L1 L2 L3 JOIN
TERMINAL	U1 V1 W1 W2 U2 V2
LOW	T1, T7 T2, T8 T3, T9 --- T4,T5,T6 ---
HIGH	T1 T2 T3 T4, T7 T5, T8 T6, T9

Regal Beloit America, Inc.

DRAWN BY JGO	<p>Regal Beloit America, Inc.</p>	DESCRIPTION <b>EXTERNAL WIRING DIAGRAM</b> 3 PHASE - DUAL VOLTAGE - W/TERM BLOCK
DATE 03/10/2004		MAT'L IEC/NEMA MARKINGS
APPROVED BY MJS		PROCESS/FINISH
DATE 02/17/2010	SIZE A	DRAWING NUMBER 005465ME-01
REFERENCE	THIRD ANGLE PROJECTION	SHEET 1 OF 1

DRAWING REVISION D	REVISION BY KVDG	REV DATE/ DATE 07/31/2025	TOLERANCES (EXCEPT AS NOTED): DEC. INCH mm ANGLE .X ±0.1 [±3] ±0.5° .XX ±0.01 [±0.3] .XXX ±0.005 [±0.13] .XXXX ±0.0005 [±0.013]
REQUEST NUMBER ECR-0244746	APPROVED BY DS	DATE 07/31/2025	
REQUEST NUMBER DESCRIPTION UPDATED FROM MARATHON TO RRX TEMPLATE			REMOVE BURRS & BREAK SHARP EDGES: .003/.015 [.08/.38] X 45° CORNER FILLETS: R.02 [.5] MACHINED SURFACES: 125/ 3.2/ INCH mm
COPYRIGHT (PER REVISION DATE) REGAL BELOIT AMERICA, INC. ALL RIGHTS RESERVED. PROPRIETARY AND CONFIDENTIAL INFORMATION - THIS DOCUMENT IS THE PROPERTY OF REGAL BELOIT AMERICA, INC. (OWNER) AND CONTAINS OWNER'S PROPRIETARY INFORMATION. ANY PERSON, CORPORATION OR OTHER FIRM RECEIVING IT IS DEEMED, BY RECEIVING IT, TO AGREE THAT IT, AND/OR ANY PART OF IT, SHALL NOT BE DISCLOSED TO ANY PERSON, CORPORATION OR OTHER ENTITY, DUPLICATED, AND/OR USED, EXCEPT AS EXPRESSLY APPROVED IN WRITING IN ADVANCE BY OWNER. THIS DOCUMENT SHALL BE RETURNED TO OWNER UPON REQUEST. IT MAY BE SUBJECT TO CERTAIN RESTRICTIONS UNDER APPLICABLE EXPORT CONTROL LAWS AND REGULATIONS.			mm DIMENSIONS IN [BRACKETS] ARE FOR REFERENCE ONLY

**CERTIFICATION DATA SHEET**

**Model#:** 71T17FH5327 A  
**CONN. DIAGRAM:** 00546501ME  
**OUTLINE:** 16986000ME

**WINDING#:** QT7142 FR 3  
**ASSEMBLY:** F3

**TYPICAL MOTOR PERFORMANCE DATA**

HP	KW	SYNC. RPM	F.L. RPM	FRAME	ENCLOSURE	KVA CODE	DESIGN
1/2&1/2	.37&.37	1800	1695&1380	71	TEFC	H	B

PH	Hz	VOLTS	FL AMPS	START TYPE	DUTY	INSL	S.F	AMB°C	ELEVATION
3	60/50	230/460#200/ 400	1.8/0.9&1.8/0. 9	LINE OR INVERTER	CONTINUOU S	F5	1.15/1.15	40	3300

FULL LOAD EFF: 74	3/4 LOAD EFF: 73.2	1/2 LOAD EFF: 69.5	GTD. EFF	ELEC. TYPE	NO LOAD AMPS
FULL LOAD PF: 70	3/4 LOAD PF: 59.5	1/2 LOAD PF: 45	0	SQ CAGE INV RATED	1.3 / .7

F.L. TORQUE	LOCKED ROTOR AMPS	L.R. TORQUE	B.D. TORQUE	F.L. RISE°C
24 LB-FT	9 / 4.5	62.4 LB-FT 260	61.2 LB-FT 255	40

SOUND PRESSURE @ 3 FT.	SOUND POWER	ROTOR WK^2	MAX. WK^2	SAFE STALL TIME	STARTS /HOUR	APPROX. MOTOR WGT
0 dBA	10 dBA	0.024 LB-FT^2	0 LB-FT^2	0 SEC.	0	0 LBS.

**\*\*\* SUPPLEMENTAL INFORMATION \*\*\***

DE BRACKET TYPE	ODE BRACKET TYPE	MOUNT TYPE	ORIENTATION	SEVERE DUTY	HAZARDOUS LOCATION	DRIP COVER	SCREENS	PAINT
STANDARD	STANDARD	RIGID	HORIZONTAL	TRUE	NONE	FALSE	NONE	BLUE (ENAMEL)

BEARINGS		GREASE	SHAFT TYPE	SPECIAL DE	SPECIAL ODE	SHAFT MATERIAL	FRAME MATERIAL
DE	OPE						
BALL	BALL	POLYREX EM	STANDARD IEC	NONE	NONE	1045 HOT ROLLED (C-204)	ALUMINUM
6203	6203						

THERMO-PROTECTORS				THERMISTORS	CONTROL	SPACE /n HEATERS
THERMOSTATS	PROTECTORS	WDG RTDs	BRG RTDs			
NONE	NOT	NONE	NONE	NONE	FALSE	NONE VOLTS

If Inverter equals NONE, contact factory for further information

\*  
N  
O  
T  
E  
S  
\*

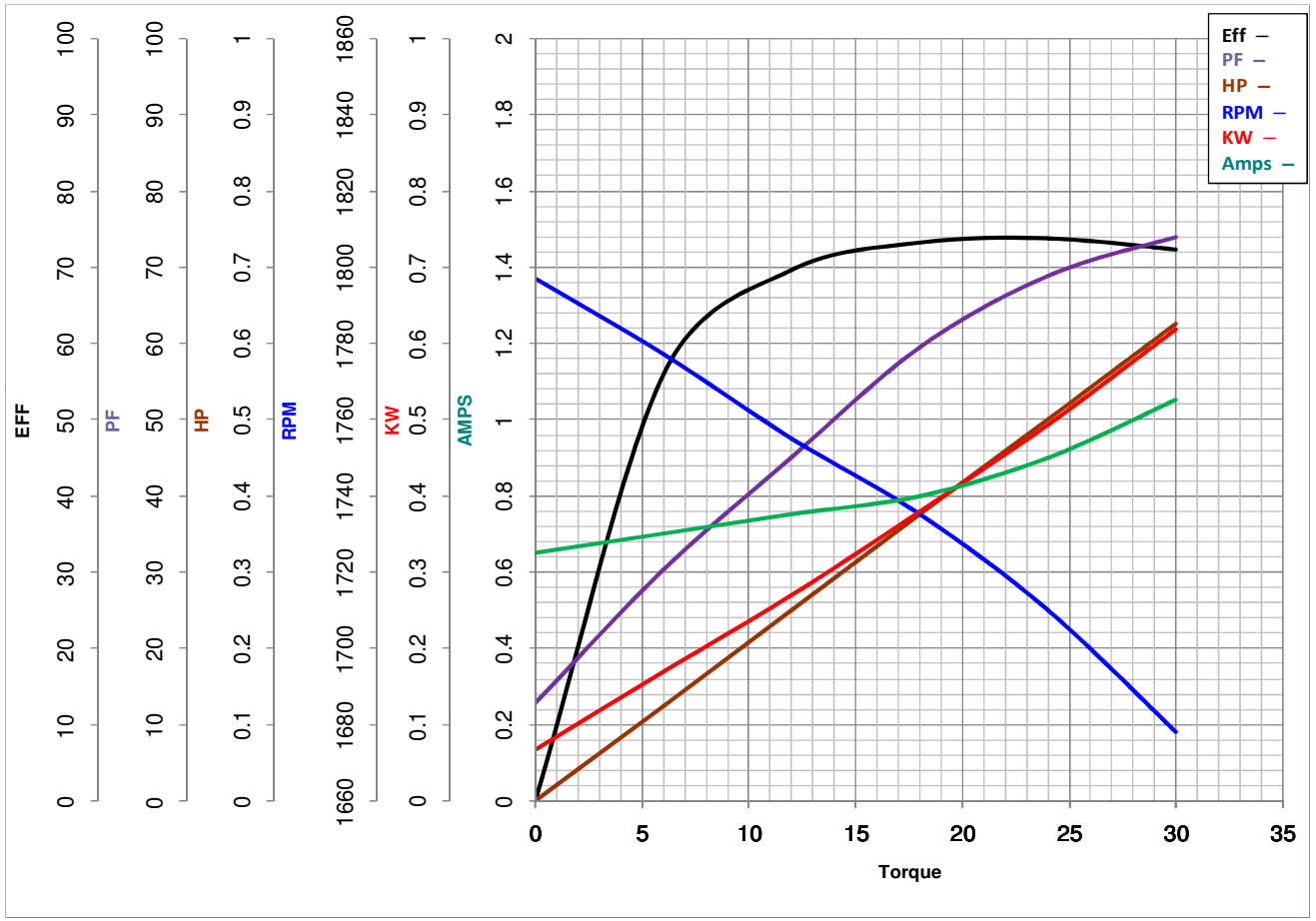
INVERTER TORQUE: CONSTANT 20:1 INV. HP SPEED RANGE: 1.5 X BASE SPEED
ENCODER: NONE NONE NONE NONE NONE PPR
BRAKE: NONE NONE NONE P/N NONE NONE NONE NONE FT-LB NONE V NONE Hz

DATE: 06/28/2017 03:42:01 AM  
 FORM 3531 REV.3 02/07/99  
 \*\* Subject to change without notice.



**MARATHON ELECTRIC CORPORATION**  
TYPICAL PERFORMANCE CURVE for AC MOTOR

Customer \_\_\_\_\_ Curve at 460 Volts HP 0.5&0.5 PHASE 3  
 Model No 71T17FH5327 60 HZ  
0.5 HP VOLTS 230/460&200/400  
 Catalog No R307 HZ 60&50 RPM 1695&1380



FL TORQUE	<u>24</u>	Oz.Ft	FL AMPS	<u>1.8/0.9</u>	
BD TORQUE	<u>61.2</u>	Oz.Ft	PU TORQUE	<u>56.4</u>	Oz.Ft
LR TORQUE	<u>62.4</u>	Oz.Ft	LR AMPS	<u>4.48</u>	
WINDING	QT7142-		Date		

## EC Declaration of Conformity

The undersigned representing  
the manufacturer:

Regal Beloit America  
1946 West Cook Road  
Fort Wayne, IN 46818

and the authorized representative  
established within the Community:

Regal Beloit Italy  
Via Modena, 18  
24040 Ciserano(BG) - Italy

are committed to providing customers with products that comply with applicable regulations and international protocols to which they are subject, including the requirements of the European Parliament Directive on the Harmonization of the laws relating to electrical equipment designed for use within certain voltage limits (2014/35/EU).

Regal Beloit America declares that the following product(s), to which this declaration relates, are in conformity with the relevant sections of the EC standards listed below.

This statement supersedes any statements previously issued pertaining to the product(s) listed below and is subject to change without notice.

Model No : 071T17FH5327

(Model No. may contain prefix and/or suffix characters)

Catalog No : R307

Rework No : N/A

Directives :

Low Voltage Directive 2014/35/EU

Harmonized Standards Used :

EN 60034-1: 2010 (IEC 60034-1: 2010)

EN 60034-5: 2001/A1:2007 (IEC 60034-5: 2000/A1:2006)

Authorized Representative:



Zach Stauffer  
Vice President, Engineering

Authorized Representative in the Community:



Stefano Casiraghi  
Technology Director, Engineering

Created on 07/08/2025

**CE 25**